



KONICA MINOLTA

The essentials of imaging



**EXPECT  
IMPACT**

# **bizhub PRO C6000 and bizhub PRO C7000**

Extraordinary imaging for smart colour production

**Production systems** bizhub PRO C6000 and bizhub PRO C7000



# Smart colour power allround

With the bizhub PRO C6000 and bizhub PRO C7000, Konica Minolta presents two versions of an innovative, high-speed colour digital system that takes image quality and consistency to new heights. Its amazing imaging capabilities in combination with a sturdy construction, professional feature set and attractive affordability make this the ideal entry-level print production solution for CRDs, print providers, high-volume offices and professionals in advertising agencies.

■ In colour as well as in black & white, the bizhub PRO C6000/C7000 deliver fast 60 resp. 71 prints per minute. Featuring Konica Minolta's advanced colour processing technology, these digital colour presses were designed specifically to answer the essential requirements of CRDs, print providers and high-volume Office with regard to quality, reliability, ease of use and economy. These merits as well as the creative possibilities of both systems are just as appreciated by advertising agencies and the graphic arts and design community.

■ Both systems combine extensive media flexibility with a versatile range of in-line finishing capabilities, making light work of the production of the most diverse materials. Their sturdy, metal construction ensures absolute dependability while their compact design facilitates integration in locations where space is limited.

■ Convenient operation and ease of use are other attributes that were important development criteria. Additionally, the bizhub PRO C6000/C7000 excel with a remarkable registration accuracy that ensures perfect results in duplex printing, including brochures and booklets.

**bizhub PRO C6000** 

**bizhub PRO C7000** 

The bizhub PRO C6000/C7000 offer a lot more than high-speed colour printing. Reaping the benefits of superior quality in combination with absolute reliability, print providers simply won't go wrong choosing either one of Konica Minolta's dependable digital colour presses.



# No limits to colour and quality

With a definite focus on fast colour and superior quality, Konica Minolta integrated advanced technology into the bizhub PRO C6000/C7000, promising to not just keep things running but taking reliability to encompass an exceptional image quality as well as highest productivity.

## ➔ Compact competence and reliability

Dependability is a fundamental issue for print providers, CRDs and advertising professionals alike. When deadlines are tight and production times are squeezed, the faultless performance of all equipment is essential, no matter whether smaller or larger print runs need to be produced urgently, or an impatient customer instantly requires sample quantities of a newly designed layout.

As an attractive asset, the bizhub PRO C6000 and PRO C7000 are amazingly compact for devices in their class. To many their remarkably small footprint will be a decisive advantage, especially if either colour press is to be installed in a crowded print room or an advertising agency where space is at a premium. Nevertheless their sturdy and robust construction always ensures a continuous and absolutely dependable performance.

## ➔ Powerful choice of controllers

To satisfy the diverse requirements of the most varied professional printing environments, the bizhub PRO C6000/C7000 can be equipped with one of four different controllers:

- The external EFI controller IC-306 is a viable all-round player that supports the impressive system functionality with latest Fiery technology and provides an intuitive, user-friendly interface between operator and digital press.
- The internal Fiery controller alternative IC-413 combines affordability, adequate colour management and PCL support with ease of use and a wide range of security features.
- The external CREO controller IC-307 is the perfect solution for VDP applications (Creo VPS) and an ideal choice for hybrid prepress workflows. Proprietary Creo Colour Server technology supports the bizhub PRO C6000/C7000 as robust workflow solutions with outstanding print quality and exceptional productivity
- The embedded Konica Minolta controller IC-601 offers affordable colour management as well as seamless integration with a wide range of Konica Minolta applications. The highlight of the IC-601 is its complete implementation into the bizhub PRO C6000/C7000 with full panel integration of the controller operation.





# Colour processing technologies



The bizhub PRO C6000/C7000 feature the latest in Konica Minolta's very own, advanced colour processing technology. Innovations like S.E.A.D. II, ITbit technology, CRS, Simitri® HD polymerised toner and Konica Minolta's "air-assist" paper feeding technology provide an unbeatable combination of outstanding quality and smooth processing, ensuring perfect results and highest reliability.

## ➔ S.E.A.D. II

Developed by Konica Minolta, S.E.A.D. II stands for „Screen-Enhancing Active Digital Process“ and combines an array of technical innovations to guarantee truly exceptional colour reproduction at top speed. S.E.A.D. II represents the second generation of Konica Minolta's advanced colour processing technology and includes these important capabilities:

### ■ 1,200 x 1,200 dpi x 8 bit print resolution

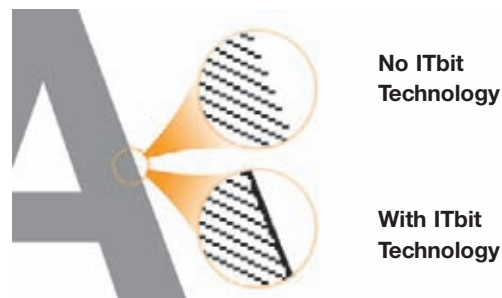
The impressive print resolution on the bizhub PRO C6000/C7000 reproduces finest characters and thinnest lines to perfection. In combination with proprietary Simitri HD toner, this results in an almost offset-like print quality.

### ■ FM screen technology

Also thanks to the excellent resolution of 1,200dpi, the bizhub PRO C6000/C7000 provide additional screens for higher quality prints, enabling smoother and more realistic image reproductions that are a perfect match to print data. The newly adopted Frequency Modulated (FM) screen technology ensures smooth moiré- and jagged-free images.

### ■ ITbit technology

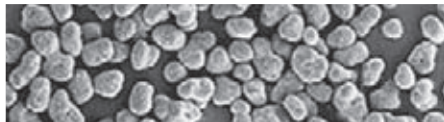
Outline processing improves the appearance of characters by thinning them so they do not appear fat. Contour processing helps to reproduce white characters on backgrounds with ideal proportions and reduces jagged edges of half-tone characters.



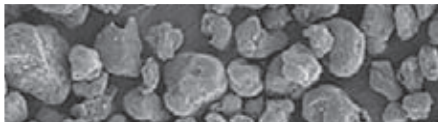
No ITbit Technology

With ITbit Technology

Simitri® HD polymerised toner



Conventional toner



■ **Image stability**

A newly developed short interval stability control monitors image consistency on the bizhub PRO C6000/C7000 during continuous printing. Corrections are fully automatic and improve the stability of the image quality, while the whole process considerably enhances production efficiency. Automated colour management tools promise increased productivity: The bizhub PRO C6000/C7000 streamline workflows with calibration that is completely hands-free, and allows operators to focus fully on producing more outstanding quality jobs in less time.

■ **Density control**

A newly developed gradation correction function meets the varied characteristics of different media by correcting the gradations according to the paper used. Key operators benefit from enhanced efficiency, as they no longer need to go through the time-consuming process of producing test patterns.

■ **Colour Retention and Stability (CRS)**

The exclusive CRS technology constantly monitors the status of the bizhub PRO C6000/C7000. Receiving continuous feedback about changes in the print environment and the engine, CRS immediately makes the necessary adjustments to always maintain highest print quality.



# Simitri HD

High Definition Polymerised Toner

■ **Simitri® HD polymerised toner**

An essential requirement in production printing, the bizhub PRO C6000/C7000 deliver a superior colour image quality as well as impressive black density with its unique Simitri® HD polymerised toner. Simitri® HD also ensures an unparalleled colour image quality and with its reduced fusing temperature supports a truly impressive range of media.

■ **Ultra-smooth paper processing**

The bizhub PRO C6000/C7000 feature fast and ultra-smooth paper processing: Where required, an optional heating unit inside the paper magazine dries paper stock before printing. Konica Minolta's "air-assist" paper feeding technology separates sheets and feeds them individually – a process that double-feed detection sensors make even more reliable! Thanks to an innovative printing and developing process, fusing temperatures are low, resulting in a considerable increase in media flexibility. Each individual print is cooled and de-curved before output giving optimum results.



# Professional performance

The bizhub PRO C6000 and bizhub PRO C7000 are comprehensively equipped to ensure top performance and productivity while minimising manual interventions. An array of features and functionalities increases user convenience and facilitates the fast processing of jobs.

- Ease of use is just one of the bizhub PRO C6000 and bizhub PRO C7000's many attractive assets. User convenience, fast and easy handling and no-nonsense operation were top development priorities for Konica Minolta's digital colour presses. User operation and programming for example are straightforward and intuitive via the large full-colour operator panel that provides clear and easy access to all functions.
- One precondition for faultless print results is absolute precision: The bizhub PRO C6000 and bizhub PRO C7000 meet this challenge with a back-to-front and page-to-page registration that comes very close to offset printing. This brings noticeable benefits especially for booklets and brochures – only two of the more complex job that the bizhub PRO C6000 and bizhub PRO C7000 take in their stride!

- Dependability is another important issue for professionals – and the bizhub PRO C6000 and bizhub PRO C7000 have been designed with reliability in mind. Beyond that Konica Minolta's remote diagnostics system CS Remote Care provides pro-active support once the bizhub PRO C6000 and bizhub PRO C7000 are in the field. With constant analysis of the system performance CS Remote Care enables automated reporting and preventive maintenance, effectively assuring maximum system uptime.





## → Impressive media flexibility

Paper processing in the bizhub PRO C6000/C7000 is fast and ultra-smooth. Thanks to Konica Minolta's "air-assist" paper feeding technology their media flexibility is extensive and covers a wide range of substrates, incl. up to 300 gsm paper, coated paper, card and digital offset stock. With up to 7,500 pages input capacity these systems easily handle long print runs. Advanced features like mixplex and mixmedia guarantee professional results also for complex print jobs.



## → Eco-friendly technology

Konica Minolta is committed to protecting the environment and assesses the environmental impact of its products at each stage of the product lifecycle, from raw material and parts procurement to manufacture, transportation, sale, use, reuse, recycling and disposal. Also in the bizhub PRO C6000/C7000, advanced eco-technologies help minimize the ecological impact of these systems. Konica Minolta's proprietary polymerised toner Simitri® HD for example saves energy as it enables considerably lower fusing temperatures. And the production of Simitri® HD generates around 40% less in CO<sub>2</sub> emissions than toner produced by conventional pulverisation. At the same time, biomass is an important ingredient in Simitri® HD toner and answers the essential requirements of the modern, CO<sub>2</sub>-conscious society.



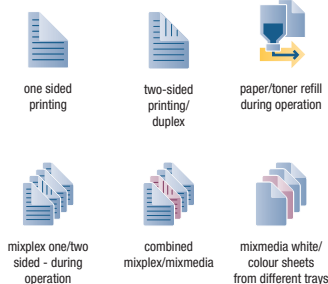


# Versatile finishing choices

Professional finishing of the printed product is an integral part of almost any job – and flexibility is the key! An attractive selection of finishing options is available to upgrade the capabilities of the bizhub PRO C6000 and PRO C7000. With these, Konica Minolta's digital colour presses accommodate customers' varied and individual requirements, and offer booklet creation, online punching and stapling as well as post insertion.

## ■ bizhub PRO C6000/C7000 (main unit)

Professional finishing starts right inside the bizhub PRO C6000/C7000 – a variety of advanced features ensures the production of sophisticated document formats. For example mixplex allows to combine single- and double-sided pages within one document. Mixmedia lets the user specify individual paper types from various trays on page-level. The combined mixmedia and mixplex function automates the production of one- and two-sided documents on different media.



## ■ Large capacity tray LU-202

Equipped with the large capacity cassette LU-202 the bizhub PRO C6000/C7000 can be loaded with up to 4,250 sheets of paper; and thanks to air-assist paper feeding as well as the optional dehumidifier, an extensive media variety can be processed.





### ■ Paper feed unit (PF-602)

Equipped with the large capacity cassette PF-602 the bizhub PRO C6000/C7000 can be loaded with up to 7,500 sheets of paper; and thanks to air-assist paper feeding as well as the optional dehumidifier, an extensive media variety can be processed.



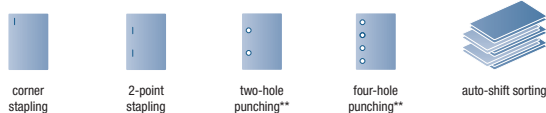
### ■ Relay unit RU-509

The relay unit RU-509 cools prints down for immediate finishing and is equipped with a zig-zag decurler for smooth and straight prints. By adding the optional humidification decurler the performance can be further enhanced.



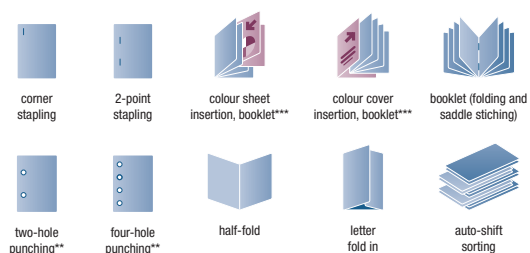
### ■ Staple finisher (FS-531)\*

This entry level finisher is the ideal choice for the production of marketing collateral and corporate documents on the bizhub PRO C6000/C7000.



### ■ Booklet finisher (FS-612)\*

Upgrading the bizhub PRO C6000/C7000 with the booklet finisher will automate the production of booklets and brochures, providing a convenient and productive in-line half-fold and saddle-stitching functionality.



\* optional post inserter (PI-502) and punch kit (PK-512/513) available, \*\* requires PK-512/513, \*\*\* requires PI-502



# System configurations

The bizhub PRO C6000/C7000 offer a modularity that provides a great choice of system configurations. The 6 different product versions ensure flexibility and answer various customer demands.

## System 1

### The system for corporate documents

- 60/71 full colour A4 pages per minute print performance
- Duplex as standard
- Highest image quality
- Up to 300 gsm (from bypass tray)
- Stapling of up to 50 sheets
- Auto-shift stacking
- Post insertion
- Output capacity up to 3,100 sheets
- Optional punching



## System 2

### The system for marketing collateral and direct mailing

- 60/71 full colour A4 pages per minute print performance
- Duplex as standard
- Highest image quality
- Up to 300 gsm (from bypass tray)
- Booklet making up to 20 sheets
- Stapling of up to 50 sheets
- Centre fold and Letter fold in
- Auto-shift stacking
- Post insertion
- Output capacity up to 2,600 sheets
- Optional punching



## System 3

### The system for corporate documents and marketing collateral

- 60/71 full colour A4 pages per minute print performance
- Duplex as standard
- Highest image quality
- 4,250 sheets paper input capacity
- Up to 300 gsm (from LU-202 or by pass tray)
- Stapling of up to 50 sheets
- Auto-shift stacking
- Output capacity up to 3,100 sheets
- Optional punching





### System 4

#### The system for brochures

- 60/71 full colour A4 pages per minute print performance
- Duplex as standard
- Highest image quality
- 4,250 sheets paper input capacity
- Up to 300 gsm (from LU-202 or bypass tray)
- Booklet making up to 20 sheets
- Stapling of up to 50 sheets
- Centre fold and Letter fold in
- Auto-shift stacking
- Post insertion
- Output capacity up to 2,600 sheets
- Optional punching



### System 5

#### The system for direct mailings and brochures

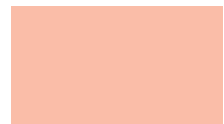
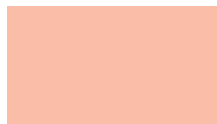
- 60/71 full colour A4 pages per minute print performance
- Duplex as standard
- Highest image quality
- 4,250 sheets paper input capacity
- Up to 300 gsm (from LU-202 or bypass tray)
- Stapling of up to 50 sheets
- Auto-shift stacking
- Post insertion
- Output capacity up to 3,100 sheets
- Optional punching



### System 6

#### The system for corporate documents and brochures

- 60/71 full colour A4 pages per minute print performance
- Duplex as standard
- Highest image quality
- 7,500 sheets paper input capacity
- Up to 300 gsm (from PF-602)
- Booklet making up to 20 sheets
- Stapling of up to 50 sheets
- Centre-fold and Letter-fold in
- Auto-shift stacking
- Output capacity up to 2,600 sheets
- Optional punching





KONICA MINOLTA

Simitri HD  
High Definition Polymerised Toner



Adobe® PostScript® 3™



## Technical specifications

### Printer specifications

**Print speed A4**  
Up to 60 ppm (bizhub PRO C6000)  
Up to 71 ppm (bizhub PRO C7000)

**Print Speed A3**  
Up to 34 ppm (bizhub PRO C6000)  
Up to 38 ppm (bizhub PRO C7000)

**Print resolution**  
1,200 x 1,200 dpi x 8 bit  
Max.: 1,200 x 3,600 dpi equivalent

**Gradients**  
256 gradations

### System specifications

**Paper weight**  
64–256 gsm,  
Up to 300 gsm

**Duplex unit**  
Non-stack type, 64–300 gsm

**Paper sizes**  
A5–A3+ (330 x 487 mm)

**Maximum image area**  
321 x 480 mm

**Paper input capacity**  
Maximum: 7,500 sheets  
Main unit: up to 1,500 sheets  
LU-202: up to 2,500 sheets  
PF-602: up to 6,000 sheets

**Paper output capacity**  
Main tray: 3,000 sheets  
Per sub tray: 100 sheets

**Main unit dimensions (W x D x H mm)**  
760 x 992 x 1,076 mm

**Main unit weight**  
356 kg (only main unit)

### Controller specifications

#### IC-306 external EFI Fiery controller

**CPU**  
Intel® Core2 Quad @ 2.66 GHz

**RAM**  
2 GB high-speed memory

**HDD**  
160 GB SATA hard drive

**Interface**  
Ethernet (10/100/1000-Base-T)

**File Formats**  
Adobe® PostScript® Level 1, 2, 3  
Adobe® PDF 1.4, 1.5, 1.6, 1.7;  
PDF/X-1a, 3; EPS(option); TIFF(option);  
TIFF/IT(option); JPEG(option);  
PPML; Creo VPS compatible  
Fiery® FreeForm™ v1/Fiery® FreeForm™ v2.1

**Client Environments**  
Windows® 7/2000/XP/Vista™  
Windows® Server 2003/2008  
Macintosh® OSX (10.3.9 or later)  
Intel Macintosh OSX (10.4 or later)

#### IC-307 external Creo controller\*

**CPU**  
Intel® Core i7 @ 2.8 GHz

**RAM**  
2 GB system memory  
3 GB image memory

**HDD**  
2x 500 GB system disc  
2x 500 GB image disc

**Interface**  
Ethernet (10/100/1,000-Base-T)

**File Formats**  
Adobe PostScript 1, 2, 3;  
Adobe PDF 1.3, 1.4, 1.5, 1.6, 1.7;  
PDF/X-1a; EPS; TIFF(except for 16 bit tiff); TIFF/  
IT; JPEG (except for Progressive JPEG and  
JPEG 2000); CT/LW  
Creo Variable Print Specification (VPS)  
PPML

**Client Environments**  
Windows® 7/XP/Vista™  
Windows® Server 2003/2008  
Macintosh® OSX up to 10.6 (64bit)

#### IC-601 internal Konica Minolta controller\*

**CPU**  
Intel® Core2 Duo @ 2.8 GHz

**RAM**  
4 GB high-speed memory

**HDD**  
2x 250 GB SATA disc space

**Interface**  
Ethernet (10/100/1,000-Base-T)

**File Formats**  
Adobe PostScript 3; PCL 5c/6;  
Native PDF; PDF 1.7; PDF/X-1a, X-3  
EPS; TIFF; TIFF/IT; JPEG; PPML

**Client Environments**  
Windows® 7/2000/XP/Vista™  
Windows® Server 2003 / 2008  
Macintosh® OSX (10.4.x to 10.6.x)

#### IC-413 internal EFI Fiery controller

**CPU**  
Intel® Dual Core @ 2.6 GHz

**RAM**  
2 GB high-speed memory

**HDD**  
160 GB SATA hard drive

**Interface**  
Ethernet (10/100/1000-Base-T)

**File formats**  
Adobe® PostScript® Level 1, 2, 3;  
Adobe® PDF 1.4, 1.5, 1.6, 1.7; PDF/X-1a, 3;  
PCL;  
Fiery® FreeForm™ v1/Fiery® FreeForm™ v2.1

**Client environments**  
Windows® 7/2000/XP/Vista™  
Windows® Server 2003 / 2008  
Macintosh® OSX (10.3.9 or later)  
Intel Macintosh OSX (10.4 or later)

### Scanner specifications

#### Scan speed A4

Up to 40 opm

#### Scan speed A3

Up to 22 opm

#### Scan resolution

600 x 600 dpi

### Scan modes

TWAIN scan; Scan-to-HDD; Scan-to-FTP;  
Scan-to-SMB; Scan-to-E-mail; Scan formats TIFF  
(single and multi page), PDF

### Copier specifications

#### Copied speed A4

Up to 60 ppm (bizhub PRO C6000)  
Up to 71 ppm (bizhub PRO C7000)

#### Copied Speed A3

Up to 34 ppm (bizhub PRO C6000)  
Up to 38 ppm (bizhub PRO C7000)

#### Gradients

256 gradations

#### FCOT

Less than 6.5 sec. (colour A4)

#### Magnification

25–400% in 0,1% steps

#### Multiple copies

1–9,999

### Accessories

#### Automatic document feeder DF-622

Max.: 100 sheets

#### Large capacity tray LU-202

1 magazine

Paper capacity: up to 2,500 sheets

Paper weight: 64 to 300 gsm

Standard paper sizes: B5–SRA3

Min. paper size: 210 x 182 mm

Max. paper size: 330 x 487 mm

#### Paper feed unit PF-602

2 magazines

Paper capacity: up to 6,000 sheets

Paper weight: 64–300 gsm (lower tray)

Standard paper sizes: B4–SRA3

Min. paper size: 100 x 148 mm (lower tray)

Max. paper size: 330 x 487 mm

#### Booklet finisher FS-612

Booklet making for up to 20 sheets (80 images)

2-point and corner stapling

Stapling up to 50 sheets

Centre fold and letter fold in

Auto-shift sorting and grouping

Output for up to 2,500 sheets

Sub tray for up to 100 sheets

#### Staple finisher FS-531

2-point and corner stapling

Stapling up to 50 sheets

Auto-shift sorting and grouping

Output for up to 3,000 sheets

Sub tray for up to 100 sheets

#### Post inserter PI-502

(Option for FS-612/FS-531)

Pre-printed sheet insertion

2 PI trays for 200 sheets each

#### Punch kit PK-512

(Option for FS-612/FS-531)

Punching (2 and 4 holes selectable)

#### Punch kit PK-513

(Option for FS-612/FS-531)

Punching (4 holes)

\* Available soon

- All specifications relating to paper capacity refer to A4-size paper of 80 gsm quality.
- All specifications relating to scanning, copying or printing speeds refer to A4-size paper that is scanned, copied or printed crosswise in multipage, simplex mode.
- The support and availability of the listed specifications and functionalities varies depending on operating systems, applications, network protocols as well as network and system configurations.
- Some of the product illustrations contain optional accessories.
- Specifications and accessories are based on the information available at the time of printing and are subject to change without notice.
- Konica Minolta does not warrant that all specifications mentioned will be error-free.
- Microsoft, Windows and the Windows logo are trademarks, or registered trademarks, of Microsoft Corporation in the United States and/or other countries.
- All other brand and product names may be registered trademarks or trademarks of their respective holders and are hereby acknowledged.

Your Konica Minolta Business Solutions Partner:



Konica Minolta  
Business Solutions Europe GmbH  
Europaallee 17  
30855 Langenhagen • Germany  
Tel.: +49 (0) 511 74 04-0  
Fax: +49 (0) 511 74 10 50  
www.konicaminolta.eu