

KONICA MINOLTA

CONNECT\_COMMUNICATE\_CONTROL\_

## GO PRO IN COLOR

with the bizhub PRO color production series

bizhub PRO C6501  
bizhub PRO C6501P  
bizhub PRO C5501



bizhub PRO  
C6501

The bizhub® PRO Color Production Series is designed to get the job done – better and faster, in color and B&W, with inline finishing, digital productivity and intelligent job management that provide real value on your production floor. At last, on-demand color printing can be cost-effective. Color quality and image definition can rival the output of costly offset equipment – with less setup time and minimum supervision. Variable data printing can fine-tune communications materials from print to print, adding powerful impact and increasing response rates exponentially. And scalable options can create a customized solution for corporate in-plant print facilities, commercial printers, and print-for-pay services – any production environment that demands more work at higher speed with lower cost.

**Large on-board color display.** A large, easy-to-read 12.1" color touch-panel display makes operation simple, even for beginners. All printing and finishing functions are easily accessible through clear, intuitive menus, so operators can handle jobs more quickly – and temporary personnel can be productive right from the start.



## GO PRO with smarter workflow and increased print output



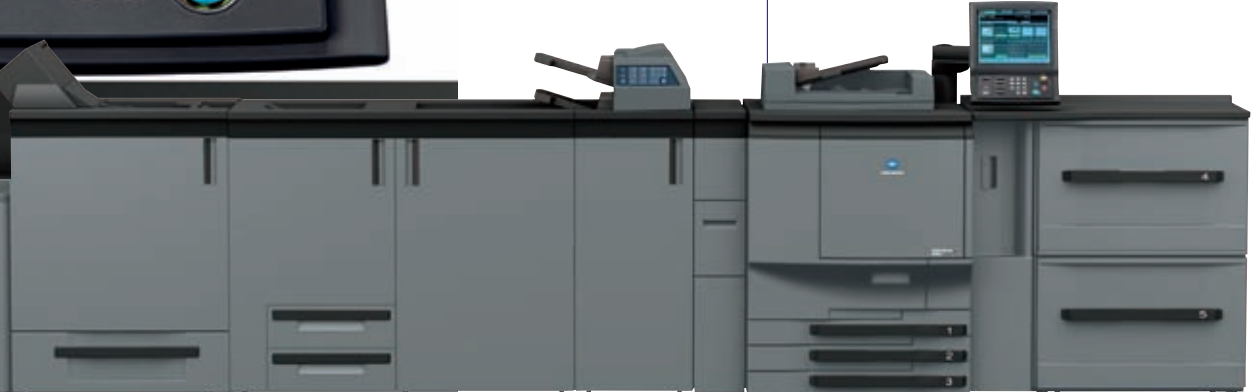
**Versatile, professional production printing.** The bizhub PRO Production Color Series creates spectacular full-color saddle-stitched or perfect-bound books, stapled presentations and reports, hole-punched training manuals, folded flyers and brochures – all the high-impact color communications materials that corporate and commercial clients demand.

**Superb color quality, first print to last.** Professional-grade enhancements to the bizhub PRO Color Production Series enable spectacular high-resolution image quality, with dot placement accuracy better than one pixel – and automatic image control that maintains consistent density and color gradation even on long print runs.



► **A choice of 3 powerful, versatile models.** With bizhub PRO C6501, you'll have 65 ppm color or B&W output plus high-speed digital scanning and copying. The bizhub PRO C6501P provides the same high output speed for applications that don't require copying or scanning. And the bizhub PRO C5501 provides print/copy/scan productivity at up to 55 ppm in color or B&W.

► bizhub PRO C6501



► bizhub PRO C6501P



► bizhub PRO C5501



**Next-generation Simitri® HD Color Polymerized Toner.** Exclusive Konica Minolta technology reduces particle size for ultra-fine image detail, with sharper text and enhanced halftone reproduction. Oil-less fusing at low temperature saves energy – and you'll have color prints and copies that resist fading, for uncompromising communications power.



**Up to 65 ppm output – in both color and B&W.** With the bizhub PRO Production Color Series, color printing never slows your workflow. A monthly duty cycle of up to 300,000 pages gives you long-running reliability and workhorse performance in high-volume production print environments.

Pulverized



**Air-assist paper feed.** Air blowers in paper trays separate sheets to improve high-speed paper handling, so even coated substrates move smoothly through your high-speed production cycle.



**Internal heating unit.** For smooth, fast throughput, an internal heating unit environmentally conditions paper stock for professional image quality with less curling and fewer misfeeds.

**Precise registration accuracy.** Front and reverse sides are precisely matched to insure accurate alignment within 1mm for booklets or other duplex multi-page documents, with independent adjustments for transversal direction and image shift.

## GO PRO with purpose-built color production power

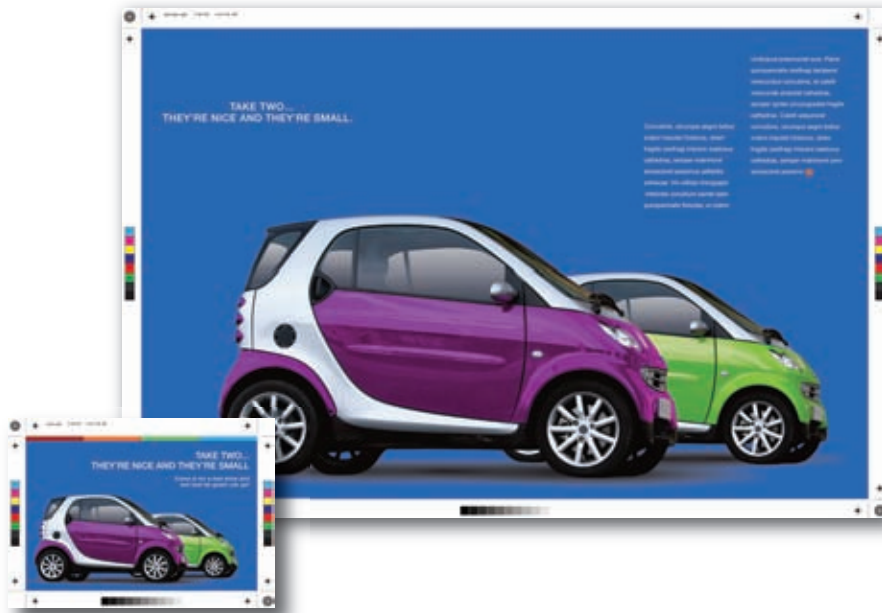


The bizhub PRO Color Production Series is purpose-built for professional needs. Unlike ordinary printer-copiers for office applications, these workhorse professionals are designed for your production floor – proven color replacements for offset equipment in today's digital world. Sturdy chassis design, a smooth paper path and special enhancements for handling oversized, heavy and coated stock give you long-running reliability you can count on. And industry-leading Konica Minolta support keeps you more productive with less downtime – a profitable advantage in any high-volume print environment.

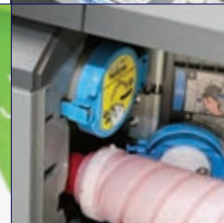
**New enhancements for superior output.** The latest bizhub PRO Color Production Series models raise the bar in image quality and consistency. Improvements in image density from first to final print ensure that printed output will meet the requirements of even the most critical eye.

**Heavy and coated stock.** The bizhub PRO Color Production Series handles heavy and coated paper stock – up to 300 g/m<sup>2</sup>, with full duplex capability up to 256 g/m<sup>2</sup>.

**Full-Bleed 12" x 18" Printing.** You can print on paper sizes from 4" x 6" up to 13.6" x 19.2", to reproduce full-bleed 12" x 18" color originals while preserving crop marks and borders – a real advantage for production print professionals.



▶ **Maximum 7,500-sheet input.** With the optional PF-602 Paper Feed Unit\*, the bizhub PRO Production Color Series can load up to 7,500 sheets – reducing labor cost by printing long runs with unattended operation.



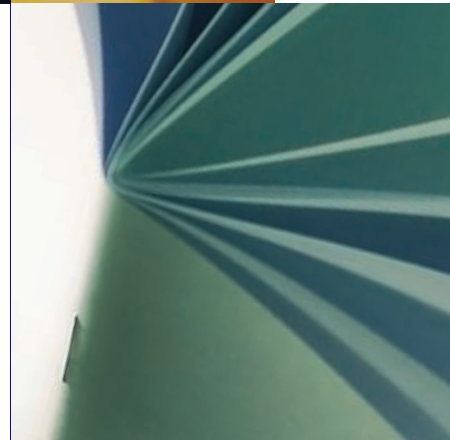
▶ **Add paper and change toner on the fly.** The bizhub PRO Production Color Series also lets you add paper without interrupting your work – and replenish toner on the fly with a clean, simple exchange of toner bottles.

\* not available with bizhub PRO C5501

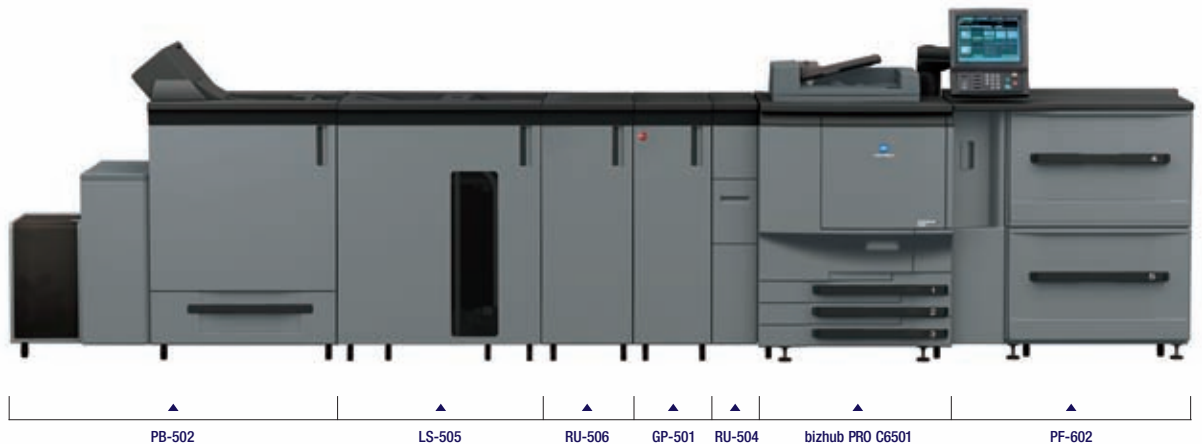


- ▶ **FS-521 Staple Finisher.\*** This modular unit lets you staple up to 100 sheets in any of 8 positions – with high-capacity enhanced stacking alignment for precision finishing.
- ▶ **SD-506 Booklet Finisher.\*** Lets you print and finish 200-page saddle-stitched booklets, with face trimming for a more professional look.
- ▶ **FD-503 Multi-Folding Unit.\*** Precise alignment of pages for error-free folding – with six versatile folding patterns, including half fold, letter fold-in, letter fold-out, z-fold, double parallel fold and gate fold.

Konica Minolta offers you the widest, most cost-effective inline finishing array of any digital equipment in the industry. You'll have the production tools and options you need to handle demanding job specs with less time and labor cost. You'll also have enhanced finishing performance – precision stacking alignment, flexible 8-position stapling, durable staple-cutting, multiple folding options, even inline perfect binding and saddle stitching. With the bizhub PRO Color Production Series, one system can do it all.



→ **GO PRO**  
with customized complex inline finishing capabilities



\* not available with bizhub PRO C5501

▶ **PB-502 Perfect Binder.\*** Creates high-quality perfect-bound books with inline finishing ease – and precisely trims cover sheets to match bound pages.

▶ **GP-501 GBC Punching Unit.** Multiple punch patterns with simple “slide-out, slide-in” punch die replacement.

▶ **LS-505 Large Capacity Stacker.\*** With 5,000-sheet capacity, this stacker holds even long print runs and accommodates tab paper – even provides a rollaway cart to move printed output more easily for nearline finishing or packing and distribution.

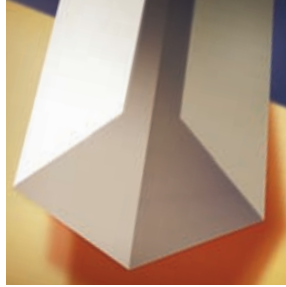
▶ **FS-520 Staple Finisher.** Small-footprint finisher that groups, sorts and staples up to 50 sheets, with 3,000-sheet output capacity.

▶ **FS-607 Booklet Finisher.** Small-footprint finisher that staples up to 50 sheets, lets you create saddle-stitched booklets of up to 80 pages (20 sheets), and offers tri-fold and half-fold capability.

▶ **PK-512 Punch Kit (for FS-607 and FS-520).** Provides selectable 2-hole and 3-hole punching.

▶ **PI-502 Post Inserter (for FS-607 and FS-520).** Enables users to add pre-printed covers to documents post-process; also provides offline folding, stapling and hole-punching.

GATE FOLD



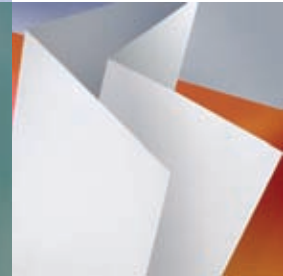
GBC PUNCHING



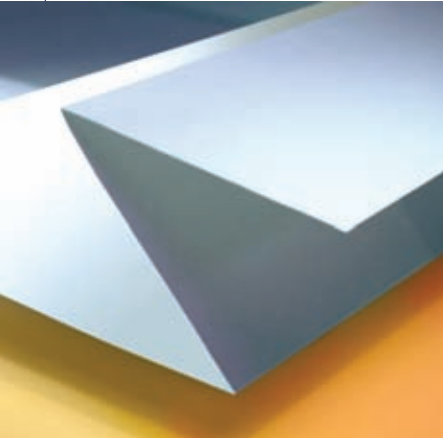
PERFECT BINDING



DOUBLE PARALLEL FOLD



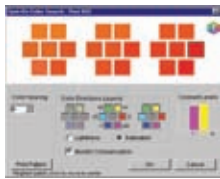
Z-FOLD



**IC-408 Internal Fiery Image Controller:**\* Drives the bizhub PRO C6501 and C5501 at full rated speed for "entry" configurations. With a combination of power and simplicity, this is a high-value, cost-effective print solution for in-house corporate and print-for-pay clients who demand high-quality color in an increasingly wide range of documents.

**IC-305 External Fiery Image Controller:** A powerful, flexible foundation for managing color production print demands – with EFI Fiery ColorWise™ color matching across multiple platforms and applications. You'll have high-speed Smart RIP and RIP-While-Print performance, centralized control of distributed printing environments, and advanced print queue management to eliminate bottlenecks that can slow down job delivery. The IC-305 provides multiple make-ready tools, variable-printing functions, advanced security features and excellent interoperability with third-party solutions based on industry standards. And seamless interface with a wide range of Fiery software options lets you handle the most exacting digital production demands.

SPOT ON COLOR



EFI COMPOSE



EFI IMPOSE



**EFI Graphic Arts Package Premium Edition.**

Expert tools for consistently accurate color proofing and digital printing – local/remote soft proofing, intuitive color editing, configurable auto-trapping, paper and halftone simulations, preflight/postflight diagnostics and much more.

**EFI Color Profiler Suite.** Advanced profiling solution with integrated color management tools to create ICC color profiles for CMYK and RGB output, evaluate and edit profiles with intuitive WYSIWYG interface, and verify color values in proofing during printing.

**EFI Impose.** Fast, intuitive document imposition, with editing and assembly for static or variable data documents, user-designed templates, thumbnail and full-size preview of post-RIP raster data, multi-up support and more.



## GO PRO with advanced image controllers & graphics options



Control is the heart of production efficiency – and the bizhub PRO Color Production Series offers you a choice of three powerful image control options to set up and execute print jobs with greater ease, speed and flexibility. The affordable internal IC-408 Fiery® Image Controller serves entry-level production environments – and the external IC-305 Fiery and IC-304 Plus Creo® Image Controllers provide a broad array of advanced workflow and color management capabilities.

**EFI Compose.** Sophisticated make-ready capabilities for both simple collated documents and complex books, manuals and variable-data applications, with WYSIWYG PDF preview and late-stage PDF editing.

**EFI Command WorkStation.** Local/remote interface in PC or Macintosh environments to print functionality, job control, thumbnail and full-screen preview, archive maintenance and updating, job log creation and more.



**IC-304 Plus External Creo Image Controller.** High-productivity power and easy-to-learn interface in a Creo Image Controller exclusively designed to maximize the power of bizhub PRO Color Production systems. The IC-304 Plus streamlines your production workflow, supports the full range of bizhub PRO finishing options, and offers an extensive feature set that delivers superior color, higher output speed and greater value for professional graphic arts services, creative agencies, mid-production applications, CRDs and commercial printers.

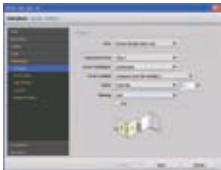
#### JOB MANAGEMENT



#### PRINT CONTROL



#### FINISHING CONTROL



#### Increased job management and throughput.

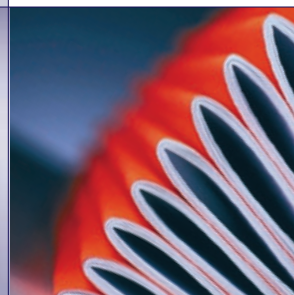
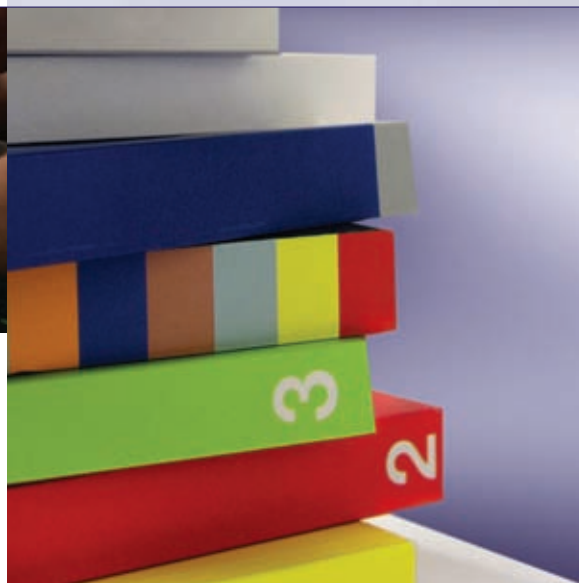
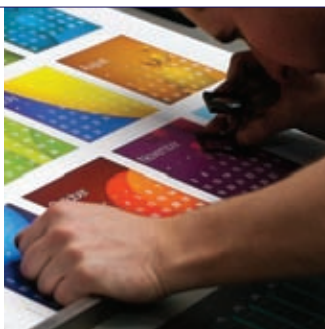
Drag-and-drop Hot Folders, preset virtual print parameters, the ability to print sample sets and make last-minute corrections, post-RIP editing, a professional imposition tool and simple automated tools for retaining print defaults to speed printing and reprinting jobs.

**Powerful color control.** Post-RIP image gradation and color corrections, RGB and CMYK color protection, spot color editing, stray color removal from black areas, gradient smoothing to improve vignettes and CT images.

**Full support for bizhub PRO finishing.** Supports inline perfect binding, printing on perfect-bound spines, mixed paper feed and sizes, z-fold booklets and more.

**Advanced variable-data printing.** Optimized for complex variable-data print jobs in all industry-leading formats, including VPS (Variable Print Specifications) and PPML – and integrates with PDF workflows.

**Flexible printing interface.** Built-in JDF/JMF capabilities for seamless integration of digital and offset printing systems, Kodak Prinergy and Kodak Brisque workflow systems, and 3rd-party workflow solutions.



# bizhub PRO C6501/C6501P/C5501

## general specifications



bizhub C6501

bizhub C6501P

bizhub C5501



### GENERAL SPECIFICATIONS:

TYPE:	CONSOLE TYPE		
PRINT/COPY PROCESS:	LASER ELECTROSTATIC TRANSFER METHOD		
DEVELOPMENT SYSTEM:	DRY-TYPE DUAL COMPONENT MAGNETIC BRUSH DEVELOPING		
PRINT/COPY SPEED:	65 PPM (8.5" X 11") COLOR AND B&W,		55 PPM (8.5" X 11") COLOR AND B&W,
MONTHLY DUTY CYCLE:	300,000 PAGES		250,000 PAGES
RESOLUTION/GRADATION:	600 X 600 DPI / 256 (8 BITS) CMYK		
MEMORY:	1 GB		
FIRST PRINT/WARM-UP TIME:	APPROX. 6.5 SECONDS (COLOR), APPROX. 5.0 SECONDS (B&W) / APPROX. 6.5 MINUTES		
COPY QUANTITY:	1 - 9,999 COPIES (COUNTDOWN, INTERRUPT CAPABILITY)		
MAGNIFICATION:	ZOOM RANGE: 25 - 400%, 0.001% INCREMENTS		
COLOR MODES:	AUTO, FULL COLOR, BLACK & WHITE, SINGLE COLOR		
EXPOSURE MODES:	TEXT (LEGIBLE TEXT), TEXT/PHOTO (CLEAR TEXT & HALFTONES), PHOTO IMAGE (OPTIMIZED FOR GRADATIONS), MAP (FINE EDGES, LEGIBLE TEXT)		
ORIGINAL SIZE:	UP TO 11" X 17" MAXIMUM	<input type="checkbox"/>	UP TO 11" X 17" MAXIMUM
PAPER SIZE/PAPER WEIGHT:	UP TO 13" X 19.2" MAXIMUM (ALL TRAYS) / UP TO 140 LB. INDEX/256 g/m <sup>2</sup> ; UP TO 170 LB. INDEX/300 g/m <sup>2</sup> (PF-602 TRAY 5)		
PAPER SUPPLY:	STANDARD: 500-SHEET UNIVERSAL PAPER DRAWERS (3) / OPTIONAL: 6,000-SHEET PAPER FEED UNIT (PF-601), 2,500-SHEET LARGE CAPACITY TRAY (LU-202)		
MAXIMUM PAPER CAPACITY:	7,500 SHEETS (TOTAL, WITH OPTIONS)		4,250 SHEETS (TOTAL, WITH OPTIONS)
POWER REQUIREMENTS:	208V - 240V, 60HZ, 16A, (DEDICATED LINE)		
DIMENSIONS (W X D X H)/WEIGHT:	31" X 39.1" X 41.63" (MACHINE ONLY) / 794 LBS.		

### AVAILABLE FUNCTIONS:

AUTO ZOOM	•	•	•
AUTO PAPER SELECT	•	•	•
AUTO LOW POWER	•	•	•
AUTO RESET	•	•	•
AUTO SHUT-OFF	•	•	•
BOOK COPY	•	<input type="checkbox"/>	•
BOOKLET PAGING	•	•	•
CHAPTERS	•	•	•
COLOR MODE	•	•	•
COLLATE	•	•	•
COMBINE ORIGINALS	•	<input type="checkbox"/>	•
COPY DENSITY	•	<input type="checkbox"/>	•
COVER SHEET FEEDING	•	•	•
CUSTOM SIZE IN ORIGINAL SETTING	•	<input type="checkbox"/>	•
CUSTOM SIZE PAPER SETTING	•	•	•
FOLDING	•	•	•
FRAME CENTER ERASURE	•	•	•
IMAGE CENTERING	•	•	•
IMAGE OVERLAY	•	•	•
IMAGE REPEAT	•	•	•
INSERT IMAGE	•	•	•
INSERT SHEET	•	•	•
INTERRUPT COPYING	•	<input type="checkbox"/>	•
JOB LIST	•	•	•
JOB LOG	•	•	•
MANUAL SHUT-OFF	•	•	•
MIXED-IN ORIGINAL SETTING	•	<input type="checkbox"/>	•
MODE MEMORY	•	•	•
MULTI-PAGE ENLARGEMENT	•	•	•
NEG./POS. REVERSE	•	<input type="checkbox"/>	•
NON-IMAGE AREA ERASE	•	•	•
NON-SORT	•	•	•
PAGE MARGIN	•	•	•
PROGRAM OVERLAY	•	•	•
POWER SAVE	•	•	•
PROGRAM JOB	•	•	•
PROOF COPY	•	<input type="checkbox"/>	•
PUNCH	•	•	•
REMOTE MONITOR (THUMBNAIL DISPLAY OF OPERATION PANEL)	•	•	•
RESERVE JOB	•	•	•
ROTATION	•	•	•
SAVE PRINT HISTORY ON HDD	•	•	•
SEPARATE SCAN MODE	•	<input type="checkbox"/>	•
SIMPLEX/DUPLEX	•	•	•
STAMP	•	•	•
STAPLE	•	•	•
TAB PAPER	•	•	•
TRIMMING	•	•	•
UNCOLLATE	•	•	•
WEEKLY TIMER	•	•	•
Z-FOLDED IN ORIGINAL SETTING	•	<input type="checkbox"/>	<input type="checkbox"/>
ZOOM	•	•	•



**OPTIONS:**

DF-609 REVERSING DUPLEXING DOCUMENT FEEDER	CAPACITY: 100 SHEETS ORIGINAL SIZE: UP TO 11" X 17" 1-SIDED/2-SIDED ORIGINALS, MIXED ORIGINAL DETECTION	□	CAPACITY: 100 SHEETS ORIGINAL SIZE: UP TO 11" X 17" 1-SIDED/2-SIDED ORIGINALS, MIXED ORIGINAL DETECTION
FD-503 MULTI-FOLDING UNIT	●	●	□
FS-520 STAPLER FINISHER	●	●	●
FS-521 STAPLE FINISHER	●	●	□
FS-607 BOOKLET FINISHER	●	●	●
GP-501 PUNCHING UNIT	DIE SET OPTIONS: DS-501 3-HOLE DIE PUNCH, DS-502 12-HOLE CERLOX PUNCH DIE, DS-503 32-HOLE WIREBIND PUNCH DIE, DS-504 21-HOLE WIREBIND PUNCH DIE, DS-505 44-HOLE COLOR COIL PUNCH DIE, DS-506 11-HOLD VELOBIND PUNCH DIE		□
HD-506 HARD DISK DRIVE	●	●	●
HT-503 HEATER/DEHUMIDIFIER	●	●	●
HT-504 HEATER/DEHUMIDIFIER	●	●	□
IC-304 PLUS EXTERNAL CREO® IMAGE CONTROLLER	●	●	●
IC-305 EXTERNAL FIERY® IMAGE CONTROLLER	●	●	●
IC-408 INTERNAL FIERY® IMAGE CONTROLLER	●	□	●
LS-505 LARGE CAPACITY STACKER	●	●	□
LU-202 LARGE CAPACITY TRAY	●	●	●
OC-506 PLATEN COVER	●	□	●
OT-502 OUTPUT TRAY	●	●	●
PB-502 PERFECT BINDER	●	●	□
PF-602 PAPER FEEDER UNIT	●	●	□
PI-502 POST INSERTER	●	●	●
PK-512 PUNCH KIT	●	●	●
RU-504 RELAY UNIT	●	●	□
RU-506 RELAY UNIT*	●	●	□
SD-506 SADDLE-STITCH FINISHER	●	●	□
1 GB MEMORY	●	●	●
2 GB MEMORY	●	●	●

\* Required for all configurations that include the GP-501

**creo**

**IC-304 PLUS EXTERNAL CREO® IMAGE CONTROLLER (C6501/C6501P/C5501):**

OPERATING SYSTEM:	MICROSOFT WINDOWS XP PROFESSIONAL SP2, ADOBE ADOBE ACROBAT 7.0 STANDARD (PDF 1.6)
HARDWARE:	INTEL CORE2 DUO PROCESSOR (3.0 GHZ, 1333 MHZ, 6MB CACHE), FUSIONIN BOARD, 1 GB SYSTEM MEMORY, 1 GB IMAGE MEMORY, 250 GB SATA SYSTEM AND USER DISK, 2 X 250 GB SATA IMAGE DISK SPACE, 10/100/1000 ETHERNET NETWORK ADAPTER, DVD R/W, X-RITE DTP34 DENSITOMETER, KEYBOARD AND MOUSE, 17" TFT LCD MONITOR, CREO COLOR SERVER STAND, GRETAGMACBETH EYE-ON SPECTROPHOTOMETER
PROTOCOLS SUPPORTED:	APPLETALK, NETBEUI, TCP/IP, IPX/SPX
SERVICES SUPPORTED:	APPLESHARE: FILE SHARING, PAP: FILE PRINTING, NETBIOS: PRINTING AND FILE SHARING, OVER TCP/IP/NETBEUI/IPX, TCP/IP: PRINTING LPR/LPD, NOVELL: NDS AND BINDERY, (NOVELL CERTIFIED CLIENT), NFS (OPTION) FILE SHARING
PAGE DESCRIPTION LANGUAGES (PDLs):	ADOBE POSTSCRIPT 3, NATIVE PDF, EPS, TIFF, TIFF/IT, JPEG/CT/LW
VARIABLE DATA FILE FORMATS:	CREO VARIABLE PRINT SPECIFICATION (VPS)
ELECTRICAL:	AC INPUT VOLTAGE: 100 TO 127 VAC/127/200-240 VAC@ 50 TO 60 HZ, AMPERE RATING: 100-127 VAC/2 A, 200-240 VAC/1 A
DIMENSIONS/WEIGHT:	FOOTPRINT: 27.6" X 41.4" X 28.4" (INCLUDING STAND AND PALLET), WEIGHT 116 LB.



**IC-305 EXTERNAL FIERY® IMAGE CONTROLLER (C6501/C6501P/C5501):**

HARDWARE:	PROCESSOR: INTEL® CORE 2 DUO 2 X 2.13 GHZ FSB, MEMORY: STANDARD: 1 GB, MAXIMUM: 3 GB, HARD DRIVE: 160 GB
SYSTEM SOFTWARE:	FIERY® SYSTEM 8 RELEASE 2
PDL/PRINT DRIVERS:	ADOBE POSTSCRIPT 3 / WINDOWS 2000, XP, 2003, VISTA 32-BIT
FONTS:	136 FONTS, VARIABLE DATA: FREEFORM V1/V2.1, PPML, V2.2 COMPLIANCE, POD: CERTIFICATION
NETWORKING/INTERFACE:	ETHERNET, APPLETALK (ETHERTALK), IPX/SPX / 10/100/1000 BASET
PROTOCOL:	NDS NETWORK 6.5 COMPLIANCE (INCLUDES IPRINT), NOVELL YES CERTIFICATION, SSL/TLS FOR HARMONY, HTTP AND USER AUTHENTICATION, TCP/IP (STATIC IP, AUTO IP, DHCP, BOOTP) [WITH IPV4/V6 SUPPORT], SNMP V3, SMB, PORT 9100 (BI-DIRECTIONAL SUPPORT), KERBEROS V5, NTLM V2.0, IPP, LDAP V3, GSSAPI, LPR-RFC, HOST RESOURCE MIB/PRINTER MIB/MIB-2, EMAIL FORMAT RFC822, SMTP-RFC821, POP3, IMAP, HTTP, HTTPS, FTP, EFI SDK V1.0, IP FILTERING, PORT BLOCKING, BONJOUR SUPPORT (V1.1 AND LATER), LDAP USER AUTHENTICATION
SCANNING:	SCAN RESOLUTION: 600 DPI, SCAN-TO-HOLD QUEUE (FOR USE WITH JOB MERGE/EDIT), SCAN-TO-EMAIL, SCAN-TO-FTP, SCAN-TO-HDD, SCAN-TO-SMB
SECURITY:	ISO 15408 EAL-3 FOR SECURE ERASE
UTILITIES:	COMMAND WORKSTATION™ WINDOWS EDITION V4.6, COMMAND WORKSTATION™ MACINTOSH EDITION V1.5, FIERY® COLORWISE® PROTOOLS V3.8, FIERY® EMAIL PORT MONITOR V1.0, FIERY® VDP RESOURCE MANAGER V1.2, FIERY® PRINTER DELETE UTILITY V2.0, FIERY® REMOTE SCAN V5.5, EFI HOT FOLDERS V2.4, FIERY® WEBTOOLS™ V3.0, SPOT ON AUTO TRAPPING
OPTIONS:	FIERY® GRAPHIC ARTS PACKAGE (GA1), FIERY® GRAPHIC ARTS PACKAGE, PREMIUM EDITION (GA2), EFI COLOR PROFILER™, EFI IMPOSE V2.7, EFI COMPOSE V2.0, HDD SECURITY KIT, FACI KIT WITH 19" WIDESCREEN OPTION, EFI SPECTROPHOTOMETER V2.0



**IC-408 EMBEDDED FIERY® IMAGE CONTROLLER (C6501/C5501):**

HARDWARE:	PROCESSOR: INTEL® CELERON-D®, 2.8GHZ FSB 533 MHZ, MEMORY: STANDARD: 512 MB, MAXIMUM: 1 GB, HARD DRIVE: 80 GB
SYSTEM SOFTWARE:	FIERY® SYSTEM 8E
PDL/PRINT DRIVERS:	ADOBE® POSTSCRIPT 3 / WINDOWS 2000, XP, 2003
FONTS:	136 POSTSCRIPT FONTS
NETWORKING/INTERFACE:	ETHERNET, APPLETALK (ETHERTALK), IPX/SPX (NDS), TCP/IP (STATIC IP, AUTO IP), SNMP V3, SMB, PORT 9100 (BI-DIRECTIONAL SUPPORT), KERBEROS V5, NTLM V2.0, IPP, LDAP V3, GSSAPI, LPR-RFC, HOST RESOURCE MIB/PRINTER MIB/MIB-2, EMAIL FORMAT RFC822, SMTP-RFC821, POP3, IMAP, HTTP, HTTPS, FTP, EFI SDK V1.0, IP FILTERING, PORT BLOCKING, LDAP USER AUTHENTICATION / 10/100/1000 BASET
SCANNING:	SCAN RESOLUTION: 600 DPI, SCAN-TO-EMAIL, SCAN-TO-FTP, SCAN-TO-HDD (MAILBOX), SCAN-TO-HOLD QUEUE
UTILITIES:	COMMAND WORKSTATION™ WINDOWS EDITION V4.5, COMMAND WORKSTATION™ MACINTOSH EDITION V1.3-V1.4, FIERY® COLORWISE® PROTOOLS V3.7-V3.8, FIERY® EMAIL PORT MONITOR, FIERY® VDP RESOURCE MANAGER V1.2, FIERY® PRINTER DELETE UTILITY, FIERY® REMOTE SCAN V5.4-V5.5, FIERY® WEBTOOLS™ SPOT ON
OPTIONAL SOFTWARE APPLICATIONS:	FIERY® GRAPHIC ARTS FEATURES: AUTO TRAPPING, HOT FOLDERS WITH VIRTUAL PRINTERS, EFI COLOR PROFILER™ SUITE V2.0, EFI IMPOSE V2.6, EFI SECURE ERASE

## bizhub PRO



© 2009 KONICA MINOLTA BUSINESS SOLUTIONS U.S.A., INC. All rights reserved. Reproduction in whole or in part without written permission is prohibited. Konica Minolta and The essentials of imaging are trademarks of KONICA MINOLTA HOLDINGS, INC. bizhub PRO is a registered trademark of KONICA MINOLTA BUSINESS TECHNOLOGIES, INC. Simitri is a registered trademark of KONICA MINOLTA BUSINESS SOLUTIONS. All other brands and product names are registered trademarks or trademarks of their respective owners.

Design and specifications are subject to change without notice.

Some functions may require options, which may or may not be available at time of launch.



**KONICA MINOLTA**

KONICA MINOLTA  
BUSINESS SOLUTIONS U.S.A., INC.  
100 Williams Drive  
Ramsey, NJ 07446

[www.kmbs.konicaminolta.us](http://www.kmbs.konicaminolta.us)  
[www.kmbs.konicaminolta.us/solutions](http://www.kmbs.konicaminolta.us/solutions)